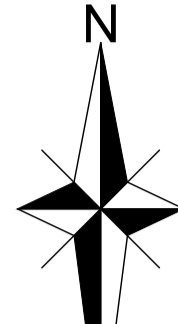


Additional notes as requested by Buckinghamshire Highways

- Any covers likely to be overrun must be D400 Heavy Duty specification.
- All works must be inspected in accordance with the Council's 'pre-commencement ticksheet' available upon request from the Council's Highways Development Management Team.
- All highway verges effected by the works must be top soiled and seeded prior to the provisional certificate being issued.
- All existing highway reinstatements must be one full lane width minimum i.e to the centreline.
- Any tie-in areas must be discussed and agreed with the Transport Inspector onsite.
- The contractor must present NRSWA accreditation cards upon Inspector's request onsite.
- All lining within the extents of the scheme to be refreshed.



Sign Schedule (dims in mm)			
Sign Ref	TSRDG Ref	Size (mm)	Supplementary Plate
S19	811 A	600 wide	Priority over oncoming vehicles
S20 *	615	600 wide	Give way to oncoming vehicles
S21	811 A	600 wide	Priority over oncoming vehicles
S22 *	615	600 wide	Give way to oncoming vehicles

All signs to be mounted on 760 posts and fitted into NAL sockets and mounted in accordance with Buckinghamshire Highways standard detail drawing PGS-SD-1200-001
 Signs shown (*) are to be externally lit using solar panels mounted to top of sign posts.
 Signs to be mounted on cranked posts to ensure that edge of sign is min 450mm from adjacent kerb edge.

Sign Schedule (dims in mm)			
Sign Ref	TSRDG Ref	Size (mm)	Supplementary Plate
S15	557.1	450 X 450	Humped crossing
S16	553.1	450 X 450	Farm Vehicles
S17	553.1	450 X 450	Farm Vehicles
S18	557.1	450 X 450	Humped crossing

All signs to be mounted on 760 posts and fitted into NAL sockets and mounted in accordance with Buckinghamshire Highways standard detail drawing PGS-SD-1200-001

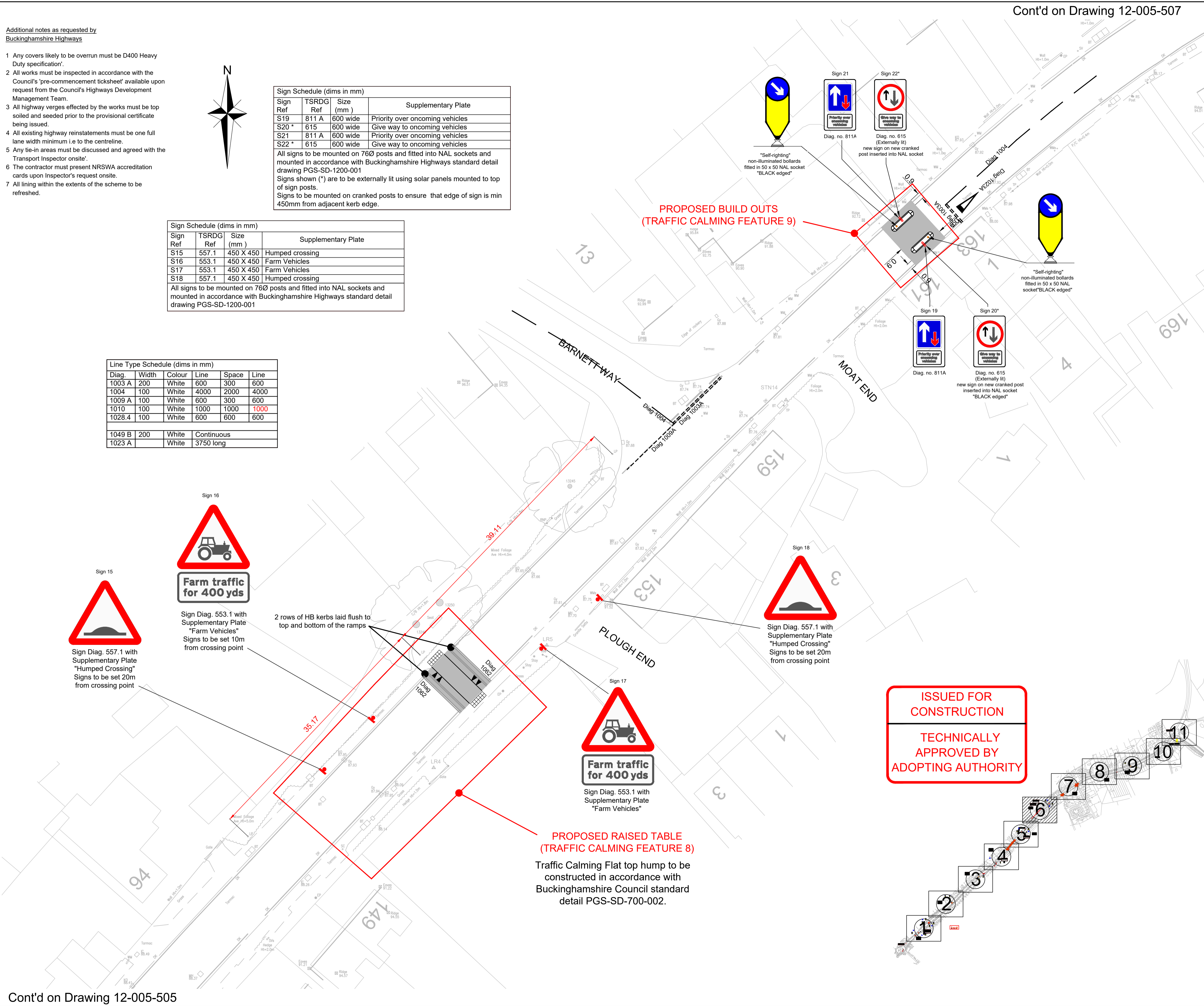
Line Type Schedule (dims in mm)					
Diag.	Width	Colour	Line	Space	Line
1003 A	200	White	600	300	600
1004	100	White	4000	2000	4000
1009 A	100	White	600	300	600
1010	100	White	1000	1000	1000
1028.4	100	White	600	600	600
1049 B	200	White	Continuous		
1023 A		White	3750 long		

Cont'd on Drawing 12-005-507

Cont'd on Drawing 12-005-507

- NOTES
- This drawing is to be read in conjunction with the relevant specification and the following drawings:-
 12-005-501 to 12-005-505 and 12-005-507 to 12-005-511 - General Arrangement Layouts.
 - All materials and workmanship shall comply fully with the Manual of Contract Documents for Highways Works, Specification for Highways Works Volume 1 and the Buckinghamshire County Council Specification for Road Construction and Standard Details.
 - Refer to drawings 12-005-512 to 12-005-522 inclusive for Site Clearance Plans.
 - Refer to drawings 12-005-523 to 12-005-533 inclusive for Surface Finishes Plans.
 - Refer to drawings 12-005-534 to 12-005-544 for the Existing Services Plans.
 - Do NOT scale from this drawing. Work from figured dimensions and Setting Out information ONLY.

PROPOSED BUILD OUTS (TRAFFIC CALMING FEATURE 9)



Rev	Amendments	Dm	Chk	App	Date
H	Amended following discussions with BC highways	EV	GG	GC	Mar 25
G	Amended following discussions with BC highways	EV	GG	GC	Feb 25
F	Traffic Calming feature moved 0.9m north following comments from property owner	EV	GG	GC	Aug 24
E	Issued for Construction - Technically approved	EV	GG	GC	July 24
D	Lining table amended following Technical Comments 3 from BC highways	EV	GG	GC	July 24
C	Amended following Technical Comments 2 from BC highways	EV	GG	GC	July 24
B	Dimensions added following comments from BC lighting engineering (Atkins realis)	EV	GG	GC	May 24
A	Amended following comments from BC highways	EV	GG	GC	May 24



Landmark House Station Road Aylesbury Bucks MK20 9HA 01296 686420 enquiries@ca-uk.com www.ca-uk.com

Issued by Park House Park Farm East Malling Trust Estate Braintree Lane Aylesford Kent MK29 6SN 01732 449766

Job Title
**Kingsbrook, Aylesbury
 Bierton Traffic Calming Measures**

Drawing Title
**General Arrangement Layout
 6 of 11**

Client
BDW North Thames Ltd

Scale	Date	Designed
1:250 @ A1	Jan 24	GG
Drawn	Checked	Approved
EV		
Job No	C & A Drawing No	Rev
12-005	12-005-D2-506	H
Client Drawing No		
12-005-H6700-D2-506		

Cont'd on Drawing 12-005-505

Cont'd on Drawing 12-005-505