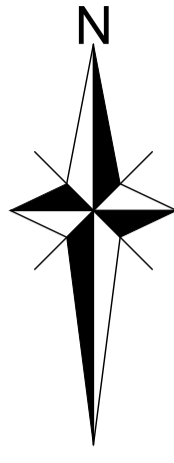


Additional notes as requested by Buckinghamshire Highways

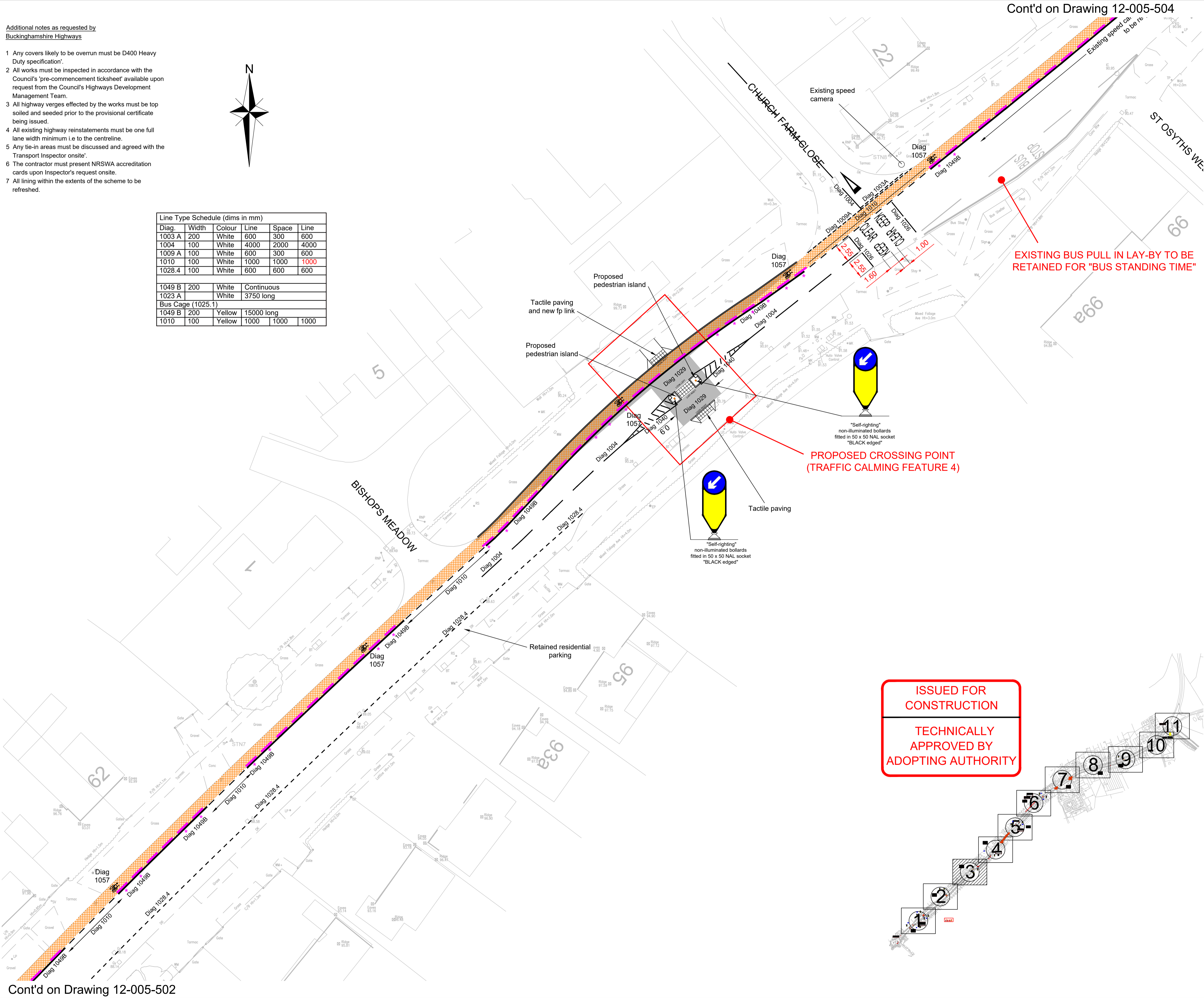
- Any covers likely to be overrun must be D400 Heavy Duty specification.
- All works must be inspected in accordance with the Council's 'pre-commencement ticksheet' available upon request from the Council's Highways Development Management Team.
- All highway verges effected by the works must be top soiled and seeded prior to the provisional certificate being issued.
- All existing highway reinstatements must be one full lane width minimum i.e to the centreline.
- Any tie-in areas must be discussed and agreed with the Transport Inspector onsite.
- The contractor must present NRSWA accreditation cards upon Inspector's request onsite.
- All lining within the extents of the scheme to be refreshed.

Line Type Schedule (dims in mm)					
Diag.	Width	Colour	Line	Space	Line
1003 A	200	White	600	300	600
1004	100	White	4000	2000	4000
1009 A	100	White	600	300	600
1010	100	White	1000	1000	1000
1028.4	100	White	600	600	600
1049 B	200	White	Continuous		
1023 A		White	3750 long		
Bus Cage (1025.1)					
1049 B	200	Yellow	15000 long		
1010	100	Yellow	1000	1000	1000



Cont'd on Drawing 12-005-502

Cont'd on Drawing 12-005-502



Cont'd on Drawing 12-005-504

Cont'd on Drawing 12-005-504

- NOTES**
- This drawing is to be read in conjunction with the relevant specification and the following drawings:- 12-005-501 and 12-005-502 and 12-005-504 to 12-005-511 - General Arrangement Layouts.
 - All materials and workmanship shall comply fully with the Manual of Contract Documents for Highways Works, Specification for Highways Works Volume 1 and the Buckinghamshire County Council Specification for Road Construction and Standard Details.
 - Refer to drawings 12-005-512 to 12-005-522 inclusive for Site Clearance Plans.
 - Refer to drawings 12-005-523 to 12-005-533 inclusive for Surface Finishes Plans.
 - Refer to drawings 12-005-534 to 12-005-544 for the Existing Services Plans.
 - Do NOT scale from this drawing. Work from figured dimensions and Setting Out information ONLY.
 - Any covers likely to be overrun must be D400 Heavy Duty specification.
 - All works must be inspected in accordance with the Council's 'pre-commencement ticksheet' available upon request from the Council's Highways Development Management Team.
 - All highway verges effected by the works must be top soiled and seeded prior to the provisional certificate being issued.
 - All existing highway reinstatements must be one full lane width minimum i.e to the centreline.
 - Any tie-in areas must be discussed and agreed with the Transport Inspector onsite.
 - The contractor must present NRSWA accreditation cards upon Inspector's request onsite.
 - All lining within the extents of the scheme to be refreshed.
 - Any covers likely to be overrun must be D400 Heavy Duty specification.
 - All works must be inspected in accordance with the Council's 'pre-commencement ticksheet' available upon request from the Council's Highways Development Management Team.
 - All highway verges effected by the works must be top soiled and seeded prior to the provisional certificate being issued.
 - All existing highway reinstatements must be one full lane width minimum i.e to the centreline.
 - Any tie-in areas must be discussed and agreed with the Transport Inspector onsite.
 - The contractor must present NRSWA accreditation cards upon Inspector's request onsite.
 - All lining within the extents of the scheme to be refreshed.

- LEGEND**
- Proposed cycle lane
 - Cycle lane separator NCDL Lite by Rosehill Highways (or similar approved). Rosehill drawing no. RHP 0049. Separators marked "*" to be fitted with bollard as per drawing. Separators to be placed as shown with minimum 1.0m gap.

Rev	Amendments	Dm	Chk	App	Date
M	Amended following discussions with BC highways	EV	GG	GC	Mar 25
L	Amended following discussions with BC highways	EV	GG	GC	Feb 25
K	Amended following discussions with BC highways	EV	GG	GC	Sept 24
J	Amended following discussions with BC highways	EV	GG	GC	Aug 24
H	Amended following discussions with BC highways and farmer	EV	GG	GC	Aug 24
G	Amended following discussions with BC highways and farmer	EV	GG	GC	Aug 24
F	Issued for Construction - Technically approved	EV	GG	GC	July 24
E	Lining table amended following Technical Comments 3 from BC highways	EV	GG	GC	July 24
D	Amended following Technical Comments 2 from BC highways	EV	GG	GC	July 24
C	Bollards amended following comments from BC lighting engineering (Tim Edwards)	EV	GG	GC	June 24
B	Amended following comments from BC lighting engineering (Atkins realis)	EV	GG	GC	May 24
A	Amended following comments from BC highways	EV	GG	GC	May 24



Issued by Kingsbrook Aylesbury Charles & Associates

Landmark House Station Road Aylesbury HP21 9HA 01296 686420 enquiries@ca-uk.com www.ca-uk.com

Park House Park Farm East Malling Trust Estate Braintree Lane Aylesford Kent ME28 6SN 01752 449766

Job Title
Kingsbrook, Aylesbury Berton Traffic Calming Measures

Drawing Title
General Arrangement Layout 3 of 11

Client
BDW North Thames Ltd

Scale	Date	Designed
1:250 @ A1	Jan 24	GG
Drawn	Checked	Approved
EV	GW	GAC
Job No	C & A Drawing No	Rev
12-005	12-005-503	M
Client Drawing No		
12-005-H6700-D2-503		